

Edition : 1.0
Date: (5/25)

Instruction Manual

PLATFORM TROLLEY RST-300

Order Code: (T670)

1.0 ASSEMBLY PRECAUTIONS

These assembly instructions provide important safety and practical guidelines to ensure a successful and safe assembly process. Here's a concise summary of the key points:

1. **Follow Instructions:** Only assemble according to provided guidelines to prevent hazards.
2. **Wear Safety Gear:** Use ANSI-approved safety goggles and heavy-duty gloves.
3. **Maintain Clean Workspace:** Ensure the assembly area is clean and well-lit.
4. **Limit Access:** Keep bystanders away during assembly.
5. **Avoid Distractions:** Don't assemble if you're tired or under the influence of substances.
6. **Understand Limits:** Weight capacity applies only to a properly assembled product.
7. **Choose the Right Surface:** Assemble on a flat, level, and stable surface.

Following these points will help ensure safety and effectiveness during assembly.

1.2 USE PRECAUTIONS

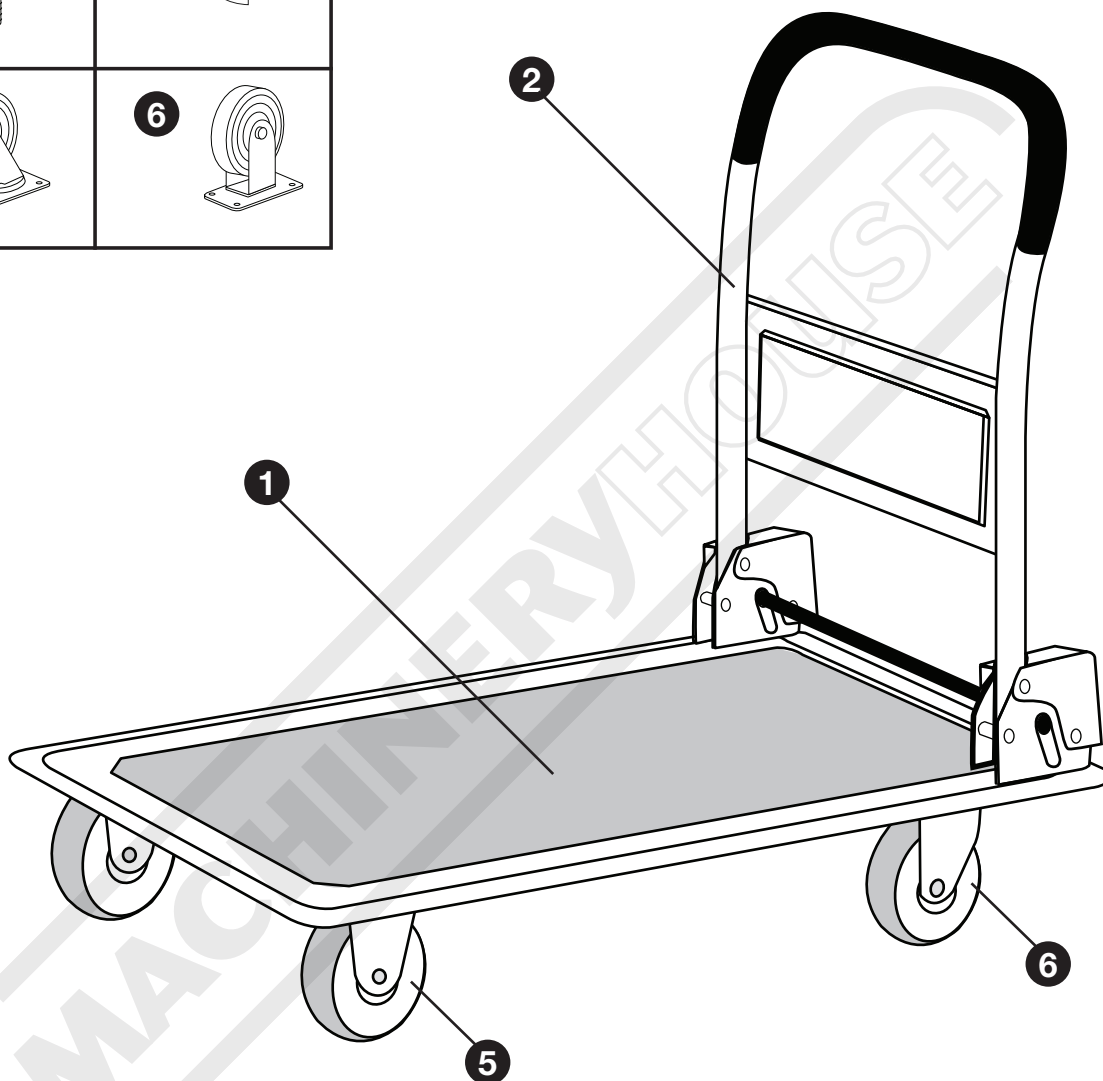
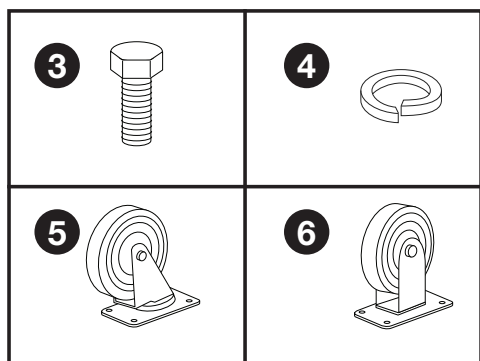
1. **No Climbing:** Do not sit, stand, or climb on this item.
2. **Child Safety:** Keep children away; this is not a children's toy.
3. **Weight Limit:** Do not exceed the 300kg load capacity; distribute loads evenly to prevent tipping.
4. **Stable Surface:** Use only on a flat, level, hard surface; be cautious over concrete seams.
5. **Avoid Lifting Loaded:** Do not lift the item while it's loaded.
6. **Handle:** Follow instructions when releasing or engaging the handle.
7. **Wear Safety Gear:** Use ANSI-approved safety goggles and heavy-duty gloves during assembly.
8. **Intended Use Only:** Use the item as intended.
9. **Inspect Before Use:** Check for loose or damaged parts before each use.
10. **Maintain Labels:** Keep product labels and nameplates intact for safety information.
11. **Read Manual:** Review the instruction manual before assembly and use.



ENVIRONMENT PROTECTION

Recycle unwanted materials instead of disposing of them as waste. All tools, accessories and packaging should be sorted, taken to a recycling centre and disposed of in a manner which is compatible with the environment. When the product becomes completely unserviceable and requires disposal, drain any fluids (if applicable) into approved containers and dispose of the product and fluids according to local regulations.

2.0 PARTS LIST



Part No.	Description	Quantity
1	Trolley main body	1
2	Handle	1
3	Bolts M10x20	16
4	Spring Washers	16
5	Swivel Casters	2
6	Fixed Casters	2

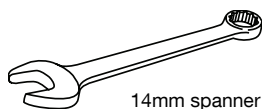
Please check that you have all the below parts before you assemble this product

3.0 ASSEMBLY

Getting Started

Before starting the assembly ensure you have the correct tools & equipment to successfully assemble the table whilst making sure you are wearing the appropriate Safety PPE.

TOOLS & ASSISTANCE NEEDED



14mm spanner

*Tools not included



STEP 1.

Turn the trolley up side down with the handle flat as shown below.

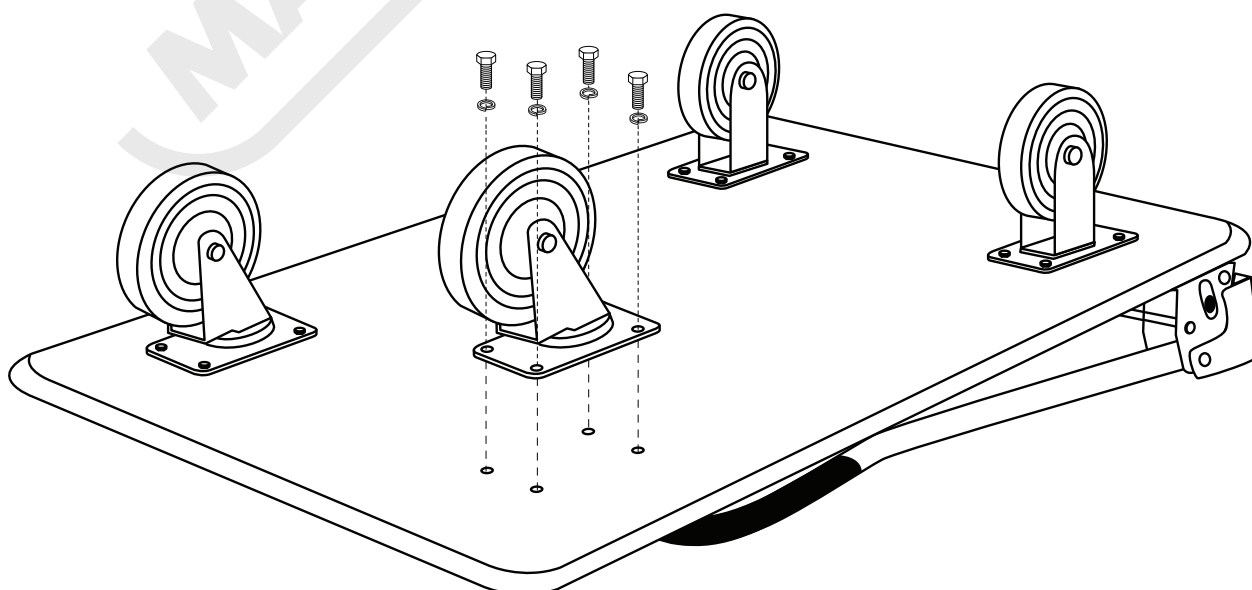
STEP 2.

Fix 2 x Swivel casters on one end and 2 x Fixed casters on the other end using 16x Bolts M10x20 (3) and Spring Washers (4) as shown below.

NOTE: The 2 Fixed and 2 x swivel casters can be installed on either end for your preference.

STEP 3.

Turn the trolley back up the right way and pull handle up to engage it ready for use.



4.0 HANDLE OPERATION

UP POSITION:

Pull up on Handle until it locks into place.

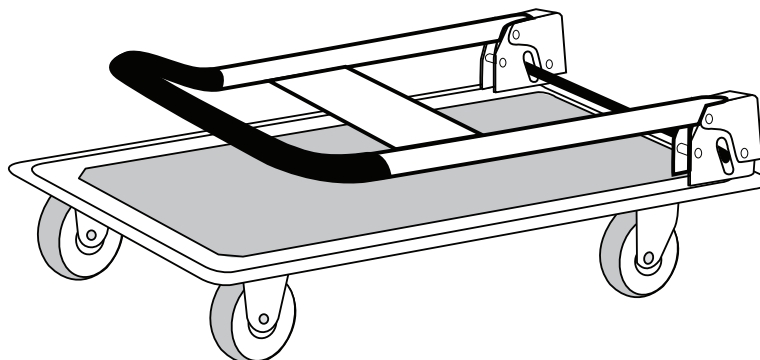
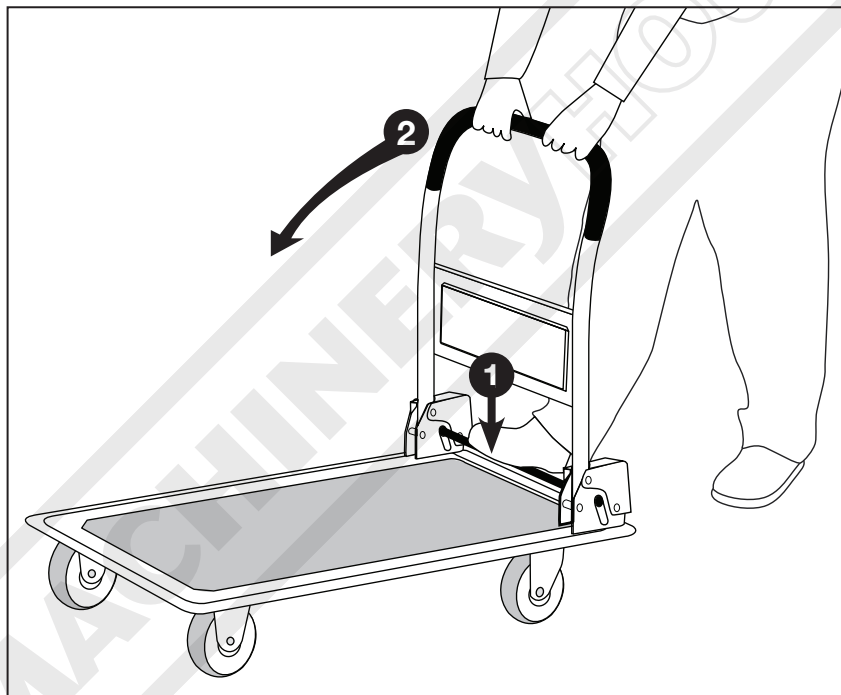
DOWN POSITION:

STEP 1.

Step on the bar at the base of the Handle, See illustration below.

STEP 2.

Push the Handle forward until it lays flat.





ENVIRONMENT PROTECTION

Recycle unwanted materials instead of disposing of them as waste. All tools, accessories and packaging should be sorted, taken to a recycling centre and disposed of in a manner which is compatible with the environment. When the product becomes completely unserviceable and requires disposal, drain any fluids (if applicable) into approved containers and dispose of the product and fluids according to local regulations.

Imported by

HARE & FORBES
MACHINERYHOUSE

Australian Distributor

Hare & Forbes
Machineryhouse
Sydney - Melbourne
Adelaide - Brisbane - Perth

Ph: 1300 202 200
www.machineryhouse.com.au

MACHINERYHOUSE

New Zealand Distributor

Machineryhouse
Auckland
Christchurch

Ph: 0800 142 326
www.machineryhouse.co.nz